

Laredo

Download Guide



FIDLAR
SOFTWARE

Proprietary and Confidential Information

Laredo Search Manual, Admin Manual, & Download Guide

©2004 Fidlar Software. All rights reserved.

Information in this document is subject to change without notice. No part of this document may be reproduced or transmitted in any form, or by any means, without prior written permission from Fidlar Software.

The Fidlar Software Laredo Search Guide, Admin Manual, and Download Guide will be periodically revised to incorporate product changes and the changes will be represented in new editions of the Reference Manual.

This manual was produced using Microsoft® Word.

Publication No. – LDRO-01-05

Release date January 5, 2004

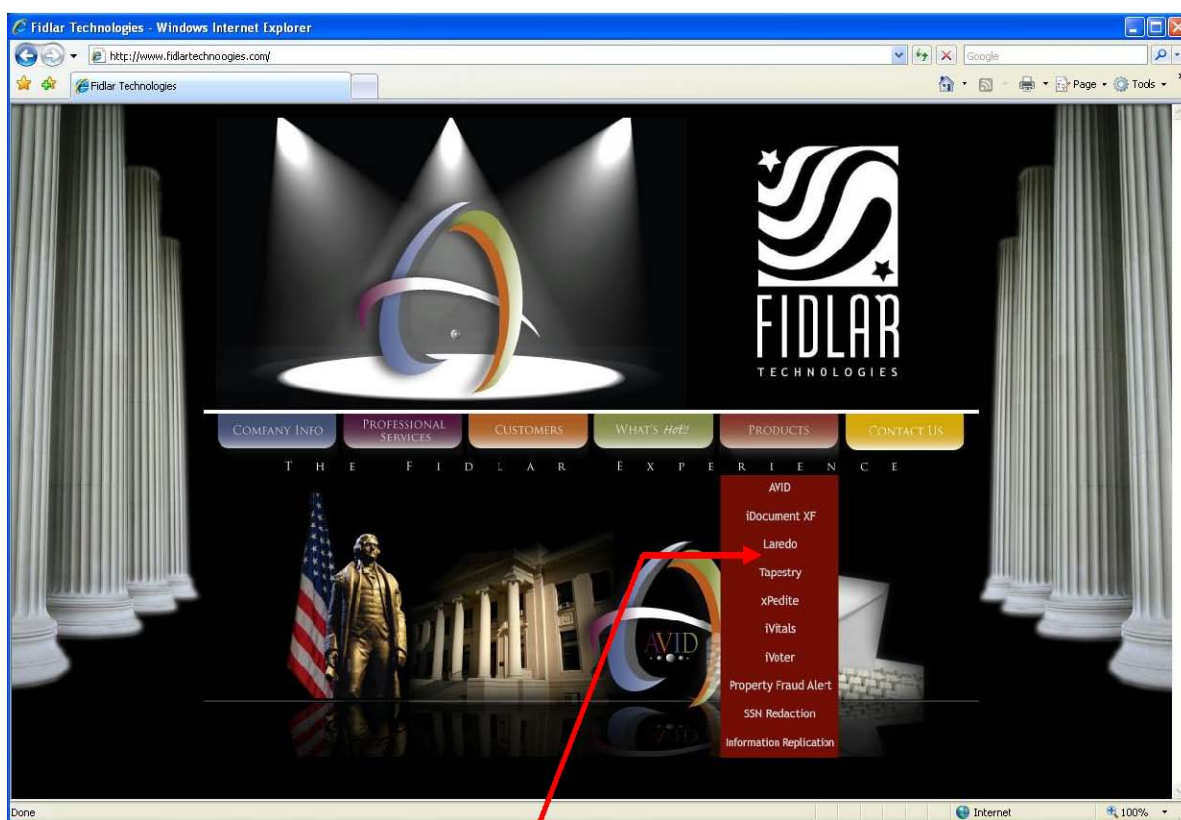
Updated April 2011

Fidlar Software
4450 48th Avenue Court
Rock Island, IL 61201
(309) 794-3283
www.fidlar technologies.com



FIDLAR SOFTWARE Laredo Download Guide

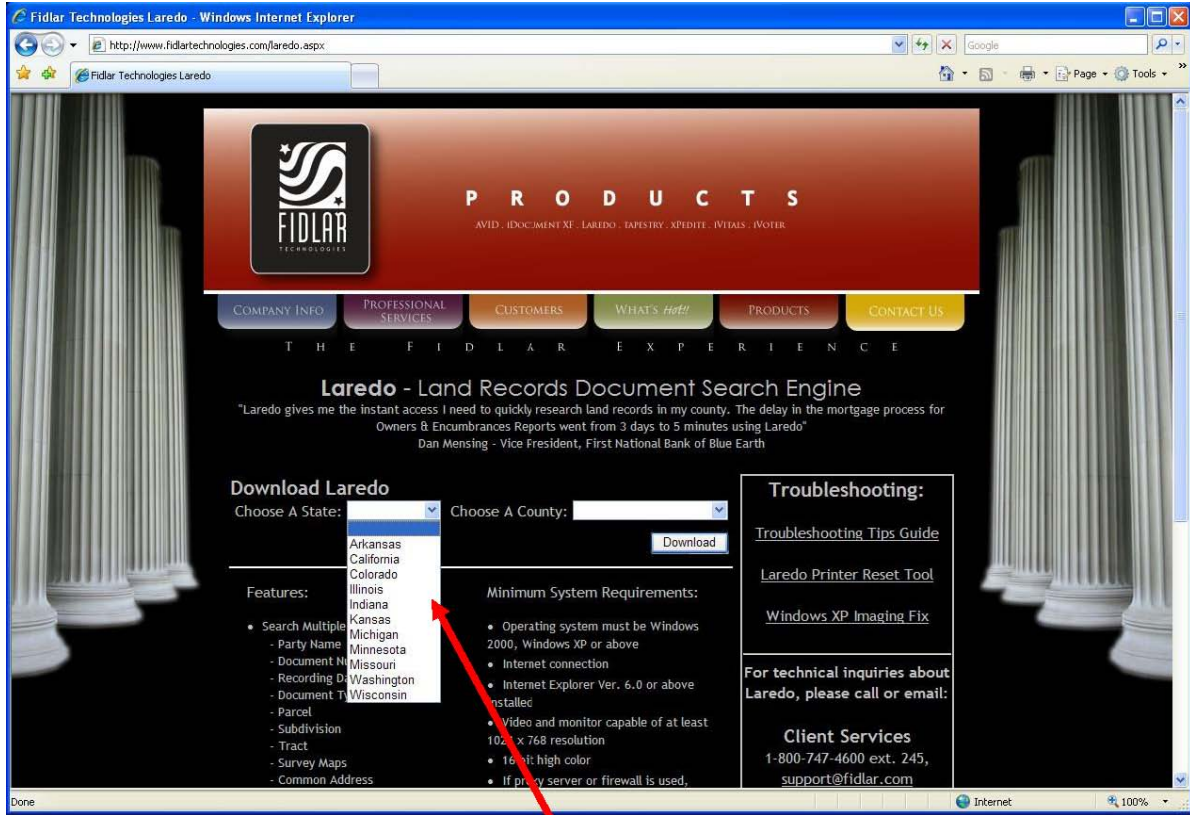
Launch your preferred Web Browser. In the Address box enter <http://www.fidlar.com> then press the ENTER key on your keyboard or click on **GO**. The page shown below will display:



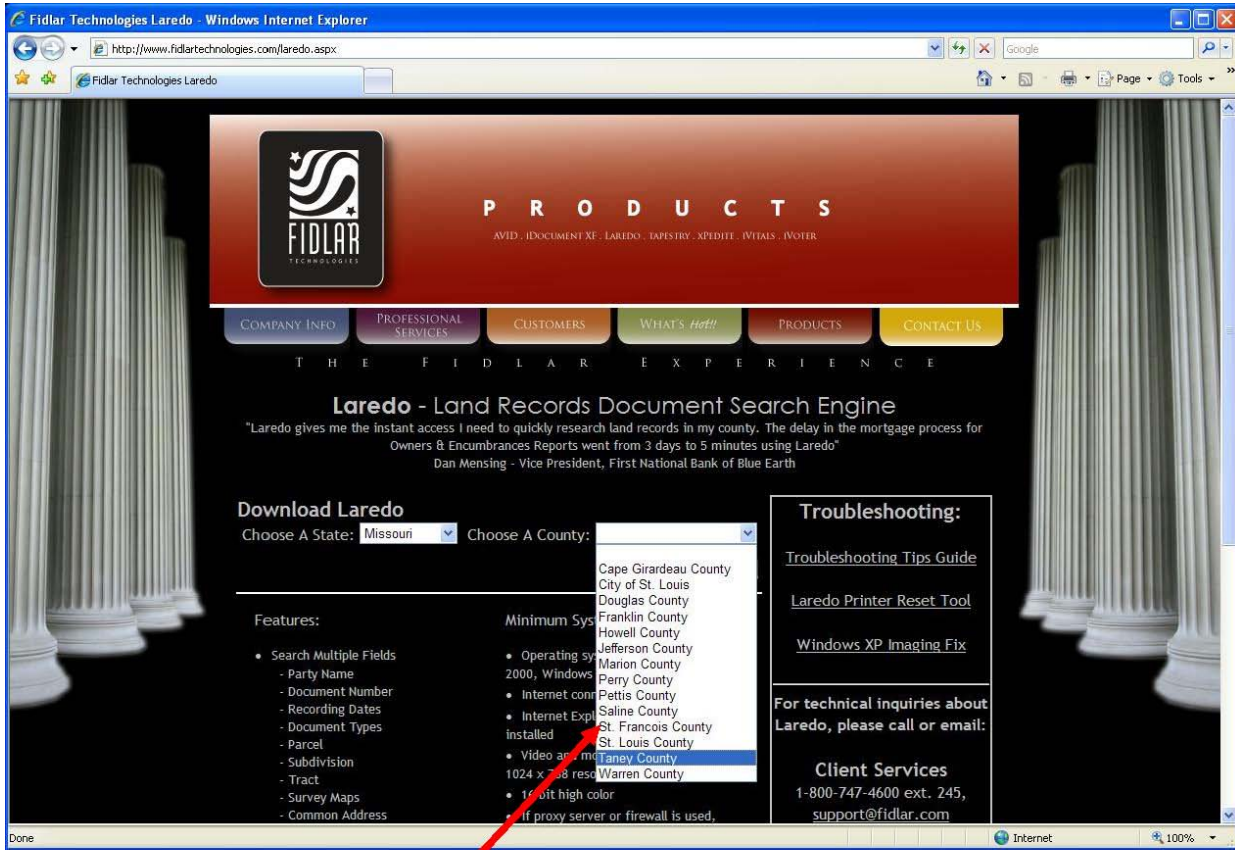
Hover your mouse on "Products" and click "Laredo".

NOTE: To avoid problems Laredo must be installed on a platform running Windows 2000 or later. You must also have Internet Explorer ver. 6.0 or later installed on your workstation.

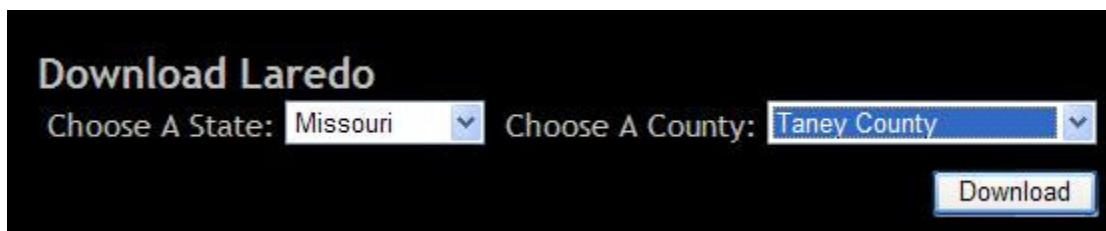
This page is displayed



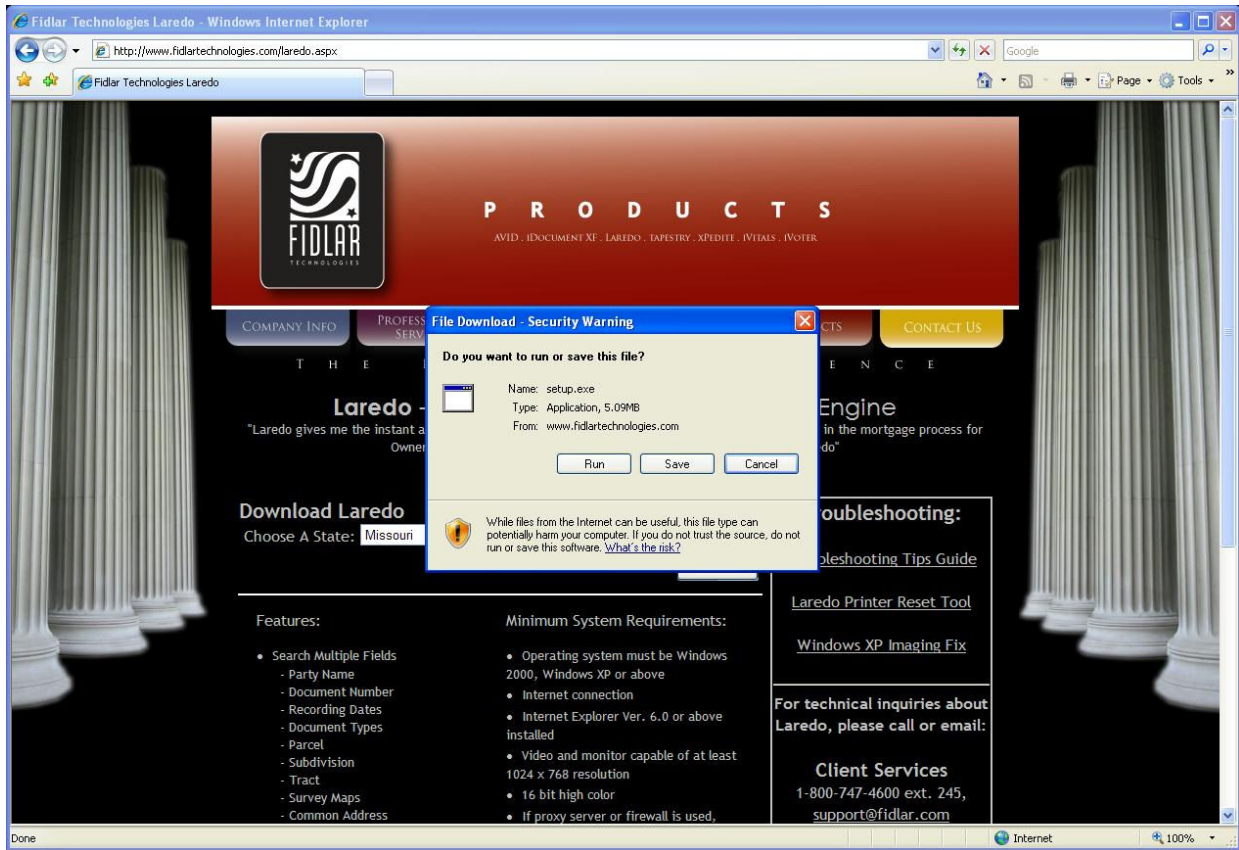
Choose a State



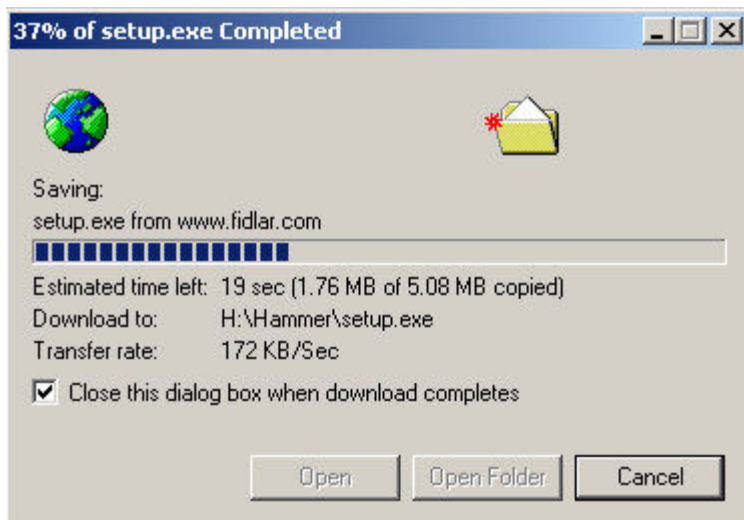
Choose A County or City.



Click on the "Download" button



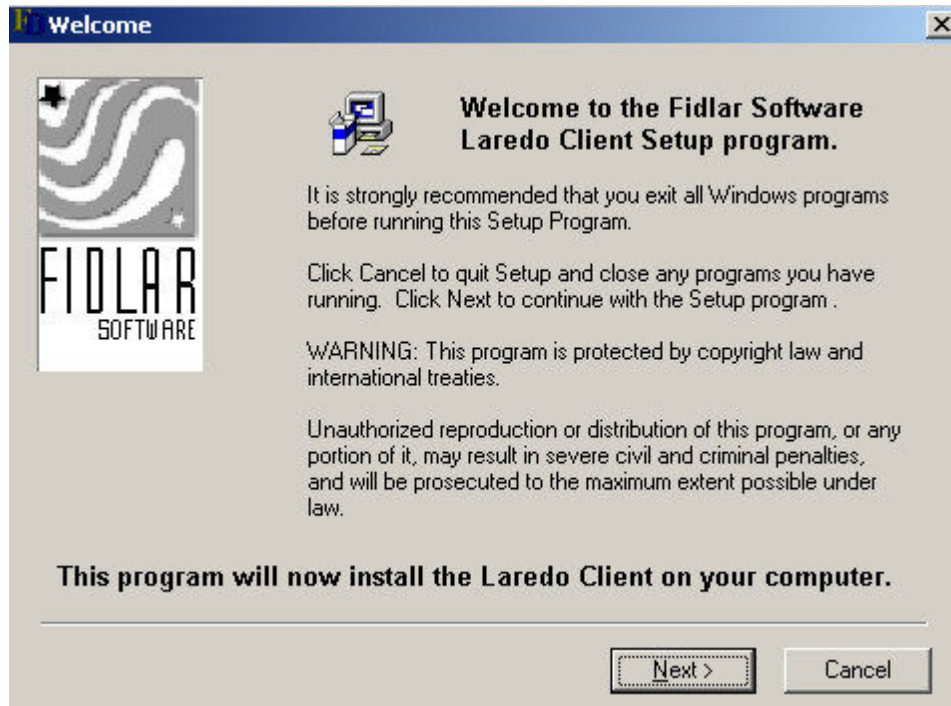
We do not recommend Opening this application. Click on **SAVE** to save the Setup.exe to a location on your computer. Browse to the location you would like to save the Setup installer. Be sure to note where you have directed it to save so that the Setup.exe can be run later. Once you have selected this location click on **SAVE**.



Wait for the Setup.exe application to save.



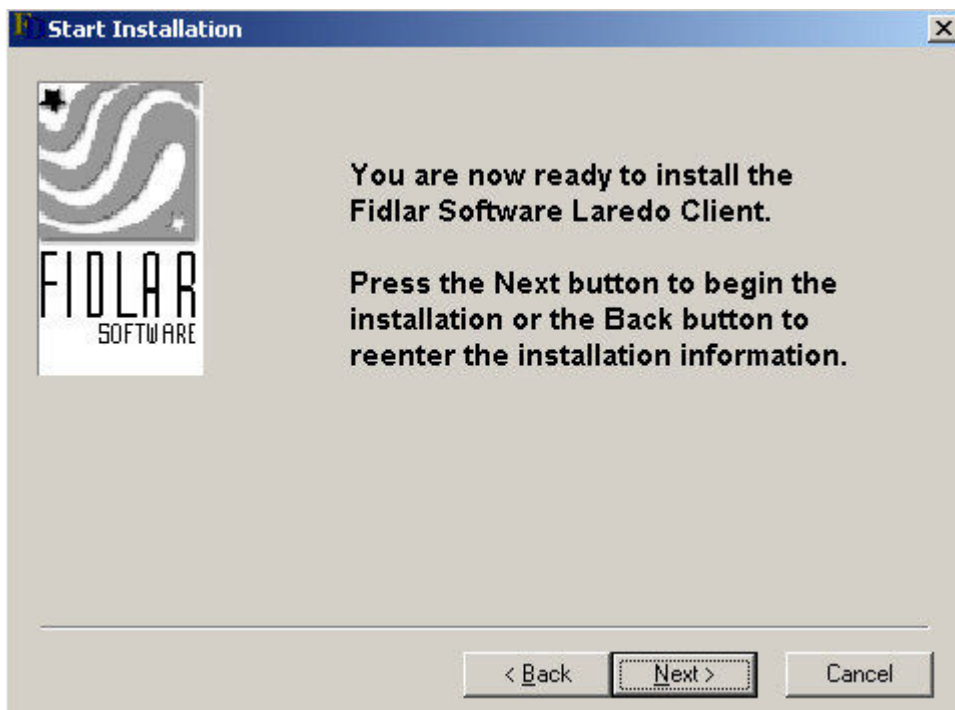
You will now see the Setup.exe icon in the location you selected.



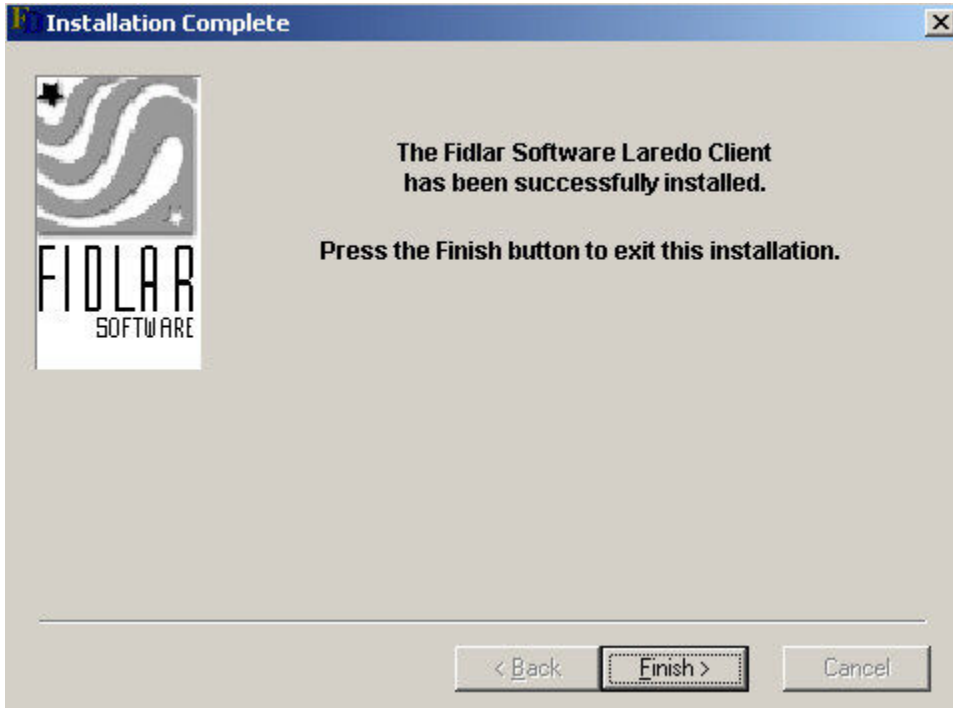
When you double click on the Setup.exe you will see the WELCOME screen. After following the directions click on **NEXT**.



The SELECT DESTINATION DRIVE screen will appear. Choose your destination drive and click on **NEXT**.



On the START INSTALLATION window, click on **NEXT**. You are now ready to install the Fidlar Software Laredo program.



When you see this INSTALLATION COMPLETE screen click on **FINISH** and you will return to your desktop.



You will now see the Laredo icon in your destination folder and are ready to run Laredo.

THINGS TO CONSIDER BEFORE SEARCHING

Many County and City offices that use Laredo limit the number of documents returned for a search. If you receive an error that too many results occurred, you need to narrow your search criteria and try again. You may need to contact the County or City office for assistance. This office is more equipped at giving you a detailed explanation of how to extract the document data you are searching. Remember the system can only return information to you if and how it has been indexed.

Be sure that the Windows Operating System on the computer loading Laredo is fully up to date with the correct hardware drivers, critical updates and service packs for the system. This will be the first thing Fidar Software Support will require if you have problems operating the Laredo program.

After launching Laredo you may see one of the following errors.

REQUEST DONE;SERVER ERROR #;1006x
REQUEST DONE;SERVER ERROR #;1005x
CANNOT COMMUNICATE WITH MIDDLE ENGINES

This may indicate that a firewall, proxy server, NAT server, or a combination of all three are set up to protect your internal network. Have your internal network or computer administrator contact Fidar Software Support for TCP/IP advice. This situation requires a trained professional to contact Fidar Software for direct help. Fidar Software does not administer any firewall, proxy server or NAT server network element.